

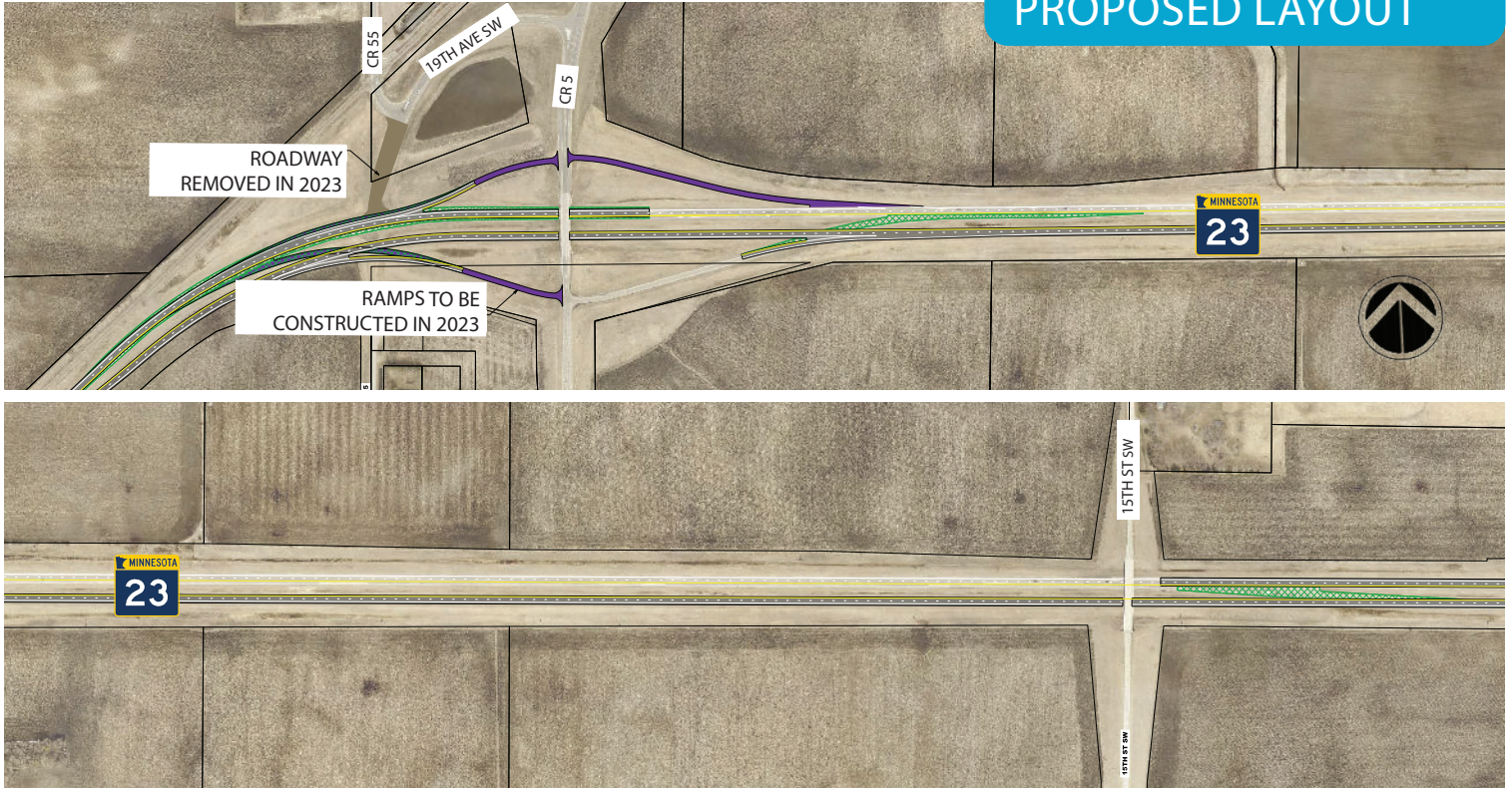


HIGHWAY 23 WILLMAR BYPASS

Kandiyohi County, Minnesota

The Highway 23 Willmar Bypass Project fills a 2.5 mile (two to four-lane) gap between US Highway 12, US Highway 71, and CSAH 5 providing regional freight access to the Willmar Industrial Park. This project is the highest priority need, in a 279-mile corridor with several planned future investments promoting safety, mobility and growth along the Highway 23 corridor.

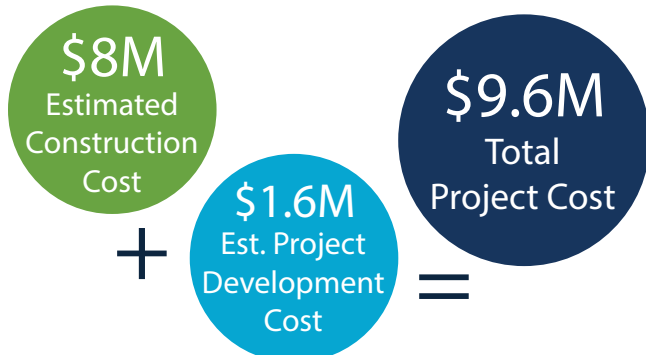
PROPOSED LAYOUT



PROJECT NEED

- » Carries 6,400 (800 heavy commercial) vehicles per day.
- » 13 crashes between 2014-2018 (a crash rated above the state average for similar roadways).
- » The second longest state transportation system traveling from Sioux Falls, South Dakota to Duluth, Minnesota and Superior, Wisconsin (see back page).
- » A vital connection for freight transportation and rural access to education, healthcare, and employment.
- » Provides access to the Willmar Industrial Park which is home to over 40 businesses and 2,400 jobs.
- » Preserves investments of over \$178M since 2006 to support the Willmar Industrial Park (see back page).
- » Within a 5-mile radius, 72% of the industries providing jobs rely on transportation for their core operations.
- » Within a 5-mile radius, 37% of the 21,400 residents are people of color (>23% Hispanic or Latino).

FUNDING NEED



PROJECT SCHEDULE

- » April to October 2022 - Corridor and Safety Audit
- » 2022-2024 - Funding Pursuits
- » 2025 - Preliminary Design & Environmental Documentation
- » 2025/26 - Final Design
- » 2026-2027 - Project Construction



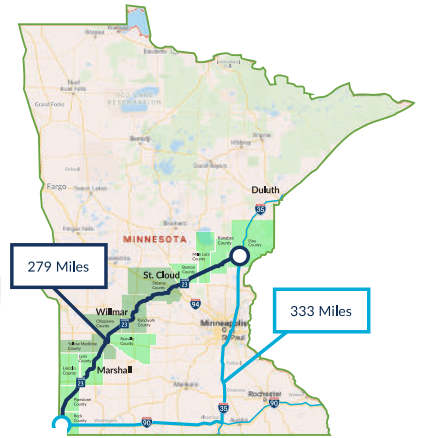
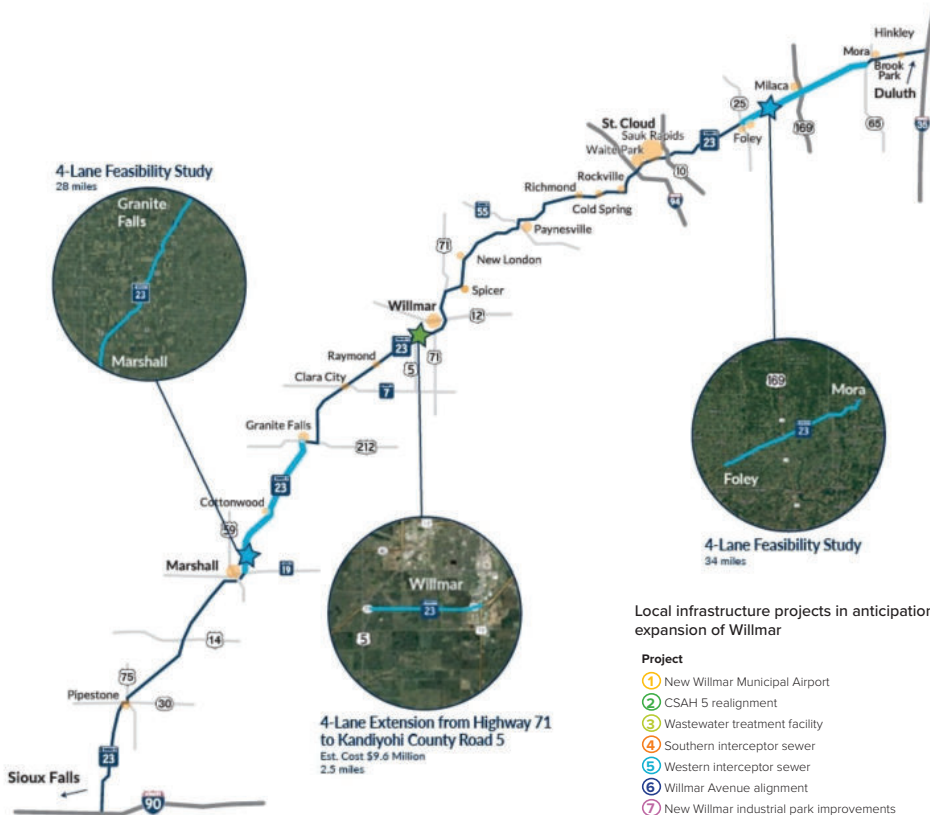


HIGHWAY 23 WILLMAR BYPASS

Kandiyohi County, Minnesota

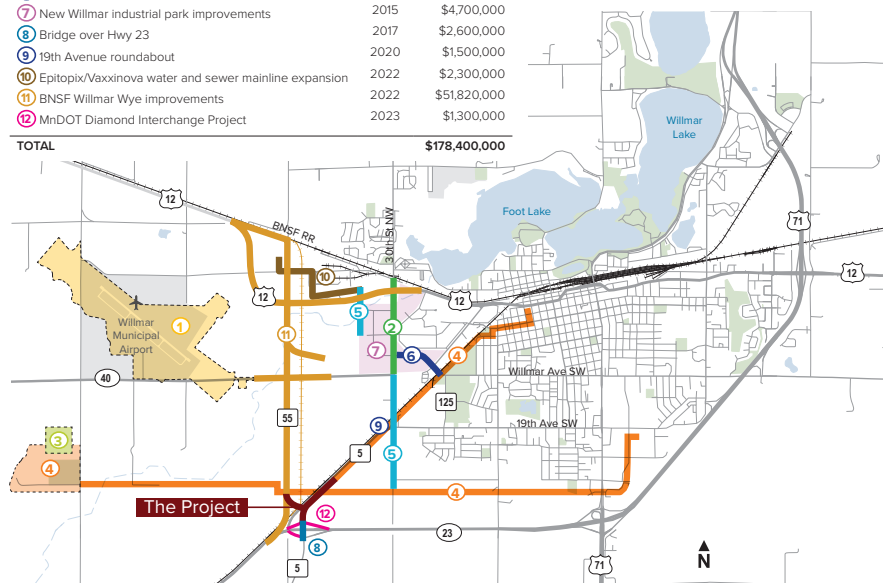
The Highway 23 Willmar Bypass Project is the highest priority need, in a 279-mile corridor with several planned future investments promoting safety, mobility and growth. Highway 23 is the second longest state transportation system in the State of Minnesota traveling from Sioux Falls, South Dakota to Duluth, Minnesota and Superior, Wisconsin. Today, much of this route remains a 2-lane highway. To address these limitations, the Highway 23 Coalition is focused on advocating for a 4-lane expansion throughout the corridor. A 4-Lane MN Highway 23 from Sioux Falls, SD to Duluth, MN & Superior, WI will provide for region-wide; time saving route across Minnesota, decreased traffic congestion in Minneapolis/St Paul metropolitan area, increased economic opportunities including tourism, and opportunity for community growth.

HIGHWAY 23 2024 PRIORITY PROJECTS



Local infrastructure projects in anticipation of the westward expansion of Willmar

Project	Year	Project Cost
1 New Willmar Municipal Airport	2006	\$23,500,000
2 CSAH 5 realignment	2007	\$3,330,000
3 Wastewater treatment facility	2010	\$62,000,000
4 Southern interceptor sewer	2010	\$20,000,000
5 Western interceptor sewer	2013	\$3,500,000
6 Willmar Avenue alignment	2014	\$1,850,000
7 New Willmar industrial park improvements	2015	\$4,700,000
8 Bridge over Hwy 23	2017	\$2,600,000
9 19th Avenue roundabout	2020	\$1,500,000
10 Eptitopix/Vaxxinoxa water and sewer mainline expansion	2022	\$2,300,000
11 BNSF Willmar Wye improvements	2022	\$51,820,000
12 MnDOT Diamond Interchange Project	2023	\$1,300,000
TOTAL		\$178,400,000



BUILDING ON THE WILLMAR INDUSTRIAL PARK INVESTMENTS

The Highway 23 Bypass Project will build upon approximately \$178M in planning and capital investments since 2006 made possible by partnerships between MnDOT, the City of Willmar, Kandiyohi County, and private developers to address critical safety needs and support vast economic development opportunities within the industrial park and areas surrounding it.

