

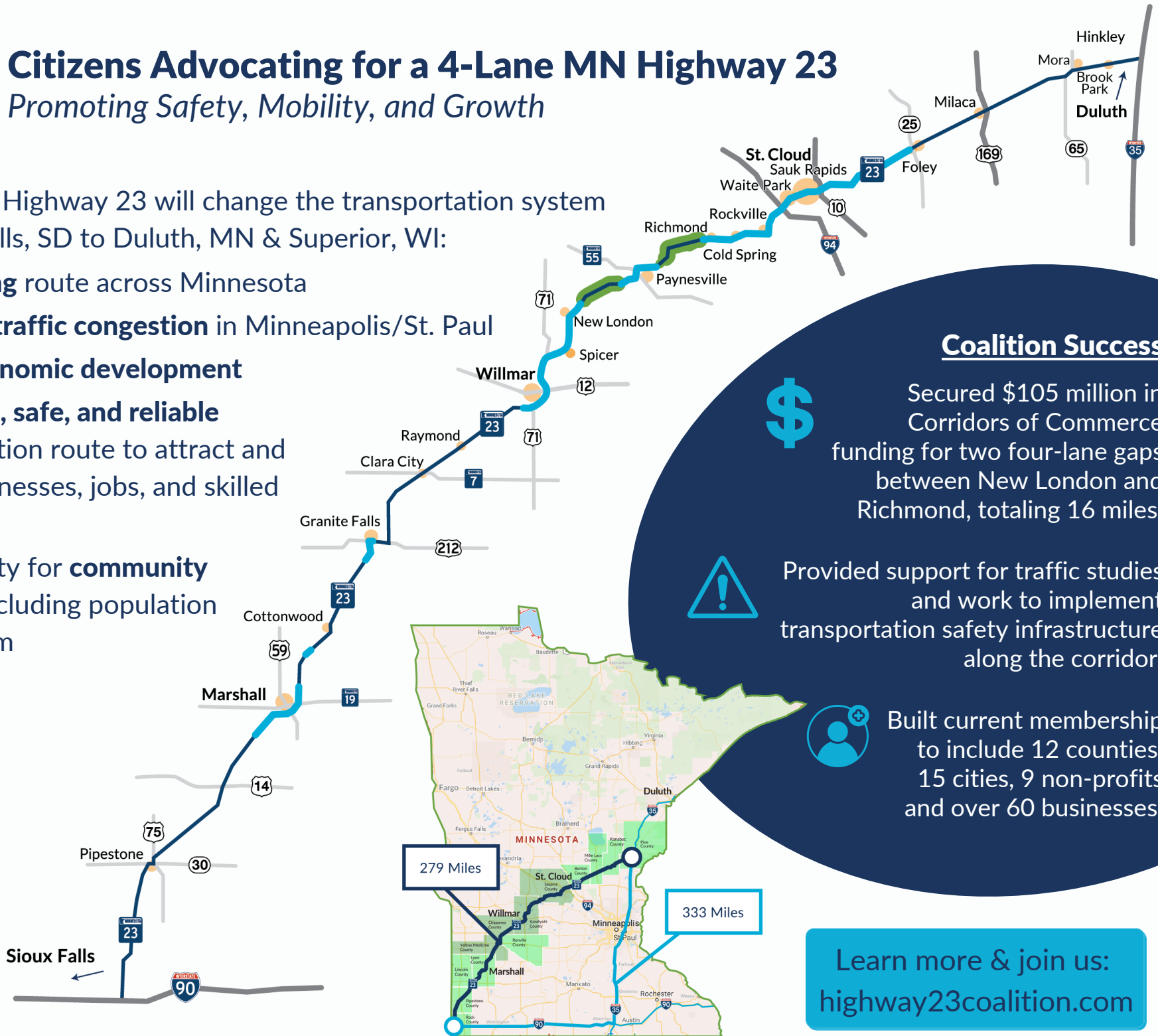


Citizens Advocating for a 4-Lane MN Highway 23

Promoting Safety, Mobility, and Growth

A 4-Lane MN Highway 23 will change the transportation system from Sioux Falls, SD to Duluth, MN & Superior, WI:

- **Time saving** route across Minnesota
- **Decrease traffic congestion** in Minneapolis/St. Paul
- Foster **economic development**
- **Accessible, safe, and reliable** transportation route to attract and retain businesses, jobs, and skilled workers
- Opportunity for **community growth**, including population and tourism



Coalition Success



Secured \$105 million in Corridors of Commerce funding for two four-lane gaps between New London and Richmond, totaling 16 miles.



Provided support for traffic studies and work to implement transportation safety infrastructure along the corridor.



Built current membership to include 12 counties, 15 cities, 9 non-profits and over 60 businesses.

Learn more & join us:
highway23coalition.com